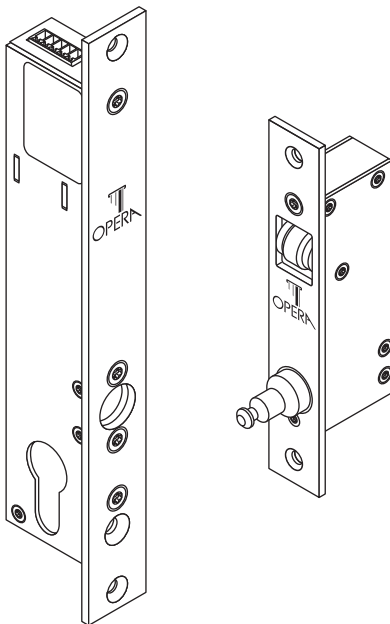




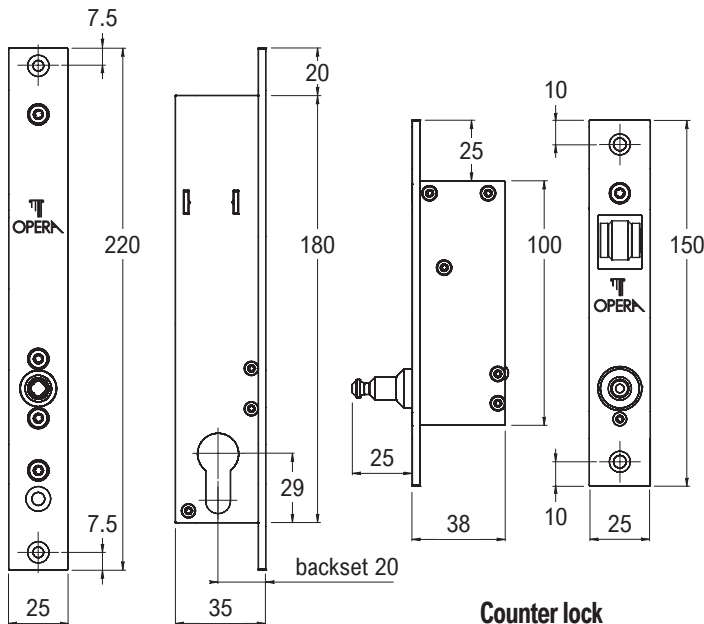
ARCA SLIDE

Art. 23622S - 23624S - 23822S - 23824S

INSTALLATION INSTRUCTIONS



TECHNICAL SPECIFICATIONS



Counter lock

ELECTRIC LOCK FOR SLIM FRAME SLIDING DOORS

Heavy duty electric lock with mechanical override to secure a slim sliding door. Counter lock with bolt release system, retracted when the door is open.

- › Stainless steel lock and counter lock body, nickered tempered steel block pin.
- › Opening limited to the duration of the impulse (item 23622S, 23624S) or to the absence of current (item 23822S, 23824S), equipped with current limiter.
- › Body width: 21 mm.
- › **Item + CF: item provided with fixed striking plate**, on request.

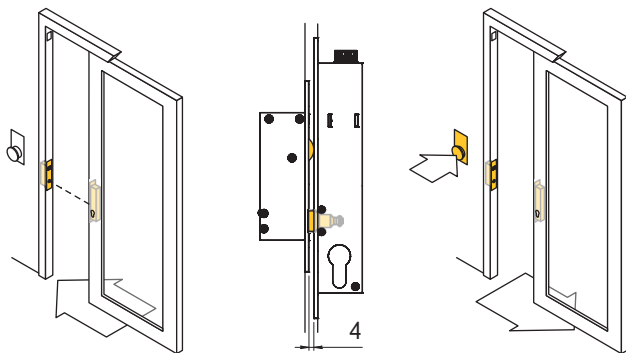
Item 23622S
Item 23822S

Item 23624S
Item 23824S

Power supply	12 Vdc	24 Vdc
Power consumption	1 A	500 mA
Holding force	800 kg	800 kg
Opening overload	Max 50 N	Max 50 N
Pin status reporting	By means of contact COM./N.O./N.C.	By means of contact COM./N.O./N.C.

INSTRUCTIONS

Close the door and verify the correct retention of the counter lock. **Activate the unlocking command** and verify the release of the lock.

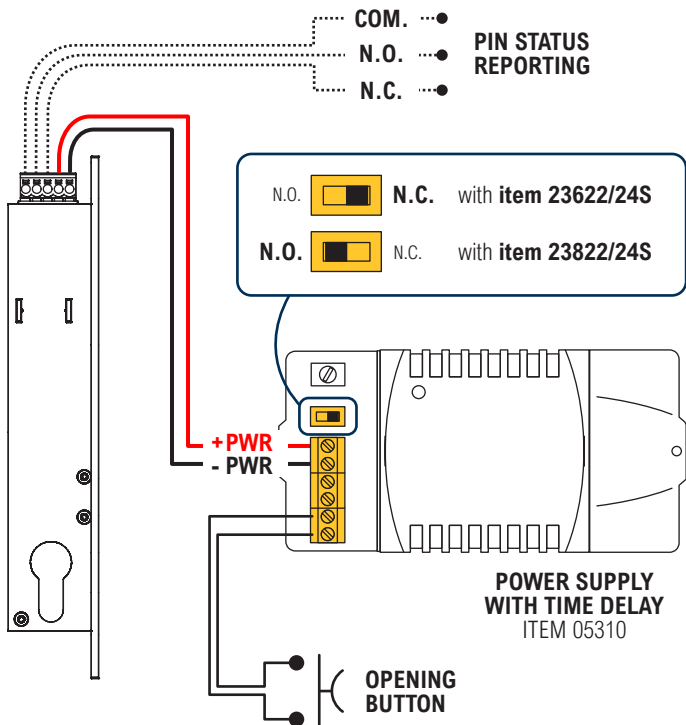


CAUTION

Do not pull the door open before the unlocking command.

It is recommended to verify periodically the correct locking of the door, the unhindered reception of the opening command and the tightening of the installed screws.

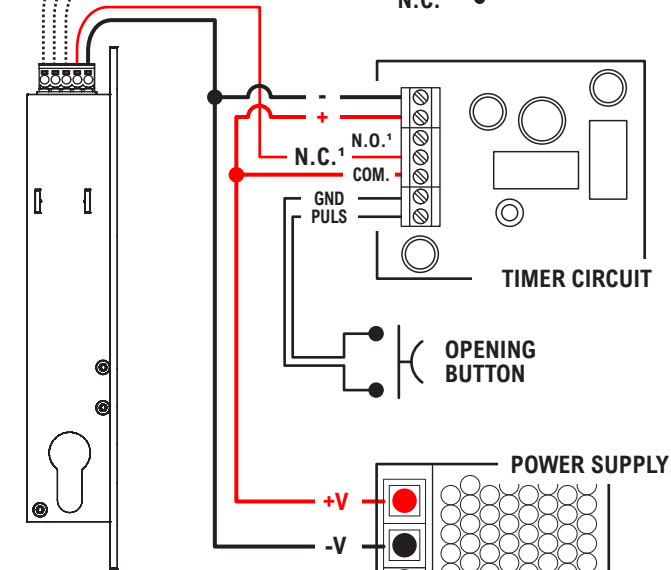
ELECTRICAL CONNECTIONS



POWER SUPPLY: 12 Vdc / 1 A item 23622S/822S
24 Vdc / 500 mA item 23624S/824S

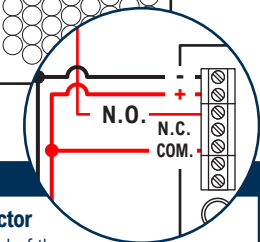
PIN STATUS REPORTING: remote reporting of the inserted/non inserted pin status.

COM.●
 N.O.● **PIN STATUS REPORTING**
 N.C.●



Item 23622S
 Item 23624S¹

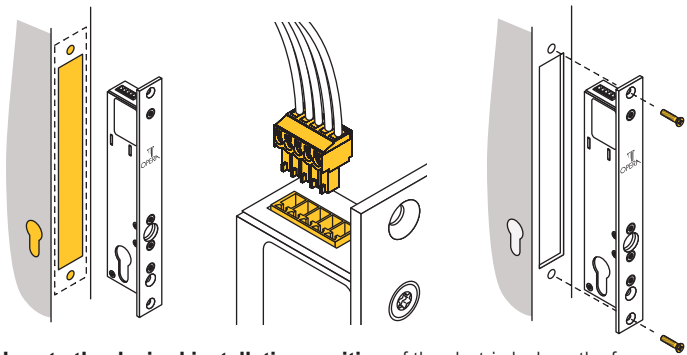
POWER SUPPLY



¹ Item 23822S / 23824S

Connect the positive contact of the lock connector to the N.O. contact of the timer circuit (instead of the N.C. contact as depicted in the main electrical diagram).

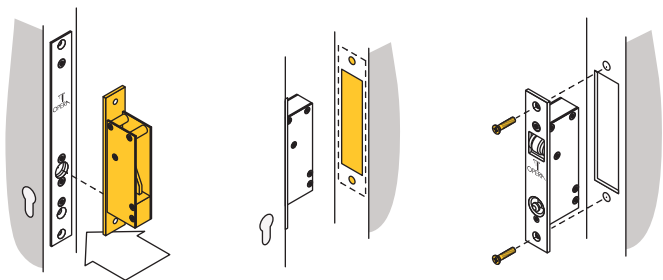
INSTALLATION



Locate the desired installation position of the electric lock on the frame.

Cut a suitable hole in the frame in order to insert the lock and **cut the hole for the cylinder**. Refer to the dimension diagram located in the *TECHNICAL SPECIFICATIONS* section.

Connect the correctly wired electrical connector (refer to *ELECTRICAL CONNECTIONS*), then **install the lock** by using suitable screws.

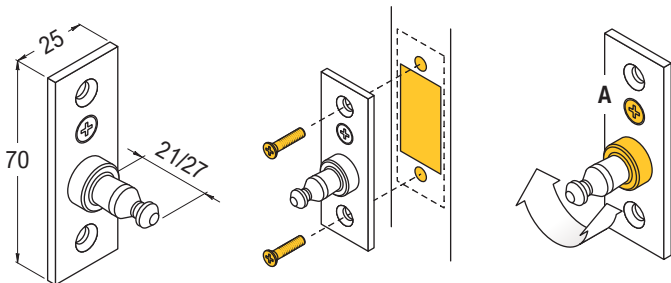


Place the counter lock in face of the lock. Slide to close the door in order to locate the exact position to make the proper hole into the door.

Cut a hole in the door suitable for the installation of the counter lock.

Install the counter lock by using suitable screws.

FIXED STRIKING PLATE INSTALLATION - Item + CF



Place the striking plate in face of the lock. Slide to close the door in order to locate the exact position to make the proper hole into the door.

Cut a suitable hole in the door, then install the striking plate by using suitable screws.

Adjust the extension of the locking pin: loosen the “A” screw, turn the locking pin to adjust its extension, then tighten the “A” screw.

TESTING AND MAINTENANCE

Item 23622S / 23624S (“FAIL SAFE”): power the lock. After the initial peak the current consumption drops down to 300 mA. Close the door and test the retention strength, then send the electrical unlocking command or use the cylinder to open the door.

Item 23822S / 23824S (“FAIL SECURE”): close the door and test the retention strength, then send the electrical unlocking command or use the cylinder to open the door. The unlocking is obtained by providing current.

In case of opening problems: make sure that lock and counter-lock are correctly lined up, no external objects interfere with the locking mechanism, the supplied voltage is correct and no force stronger than 50 N is loaded to the locking pin while sending the unlocking command.



WARNINGS

Please read the following instructions carefully.

The warnings in this manual must be observed in conjunction with the USER MANUAL. Read and keep this manual in its entirety for the life of the product, including proof of purchase and warranty. Use only supplied or recommended products.

Do not expose the product to water, weather, high temperatures or strong electro-magnetic fields. Do not install in explosive environments or in the presence of flammable vapours: safety hazard.

Entrust the installation of the electrical part to experienced personnel. Do not make modifications or repair to the electrical or electronic components. Check for proper grounding when connecting to the power supply.

Disposal of packaging in the appropriate containers is recommended.



OPERA s.r.l.

Via Portogallo, 43

41122 Modena (MO) - Italy

www.opera-italy.com

info@opera-access.it

+39 059 451708

USER MANUAL

